

# LEXIS KOREA 2022

SEOUL | BUSAN







## WELCOME TO LEXIS KOREA

Lexis Korea provides Korean language programs of the highest academic quality in two of Asia's most iconic and dynamic cities.

Both Seoul and Busan campuses are in downtown areas, minutes away from public transport, in purpose-built facilities that provide a modern study environment to complement our range of innovative programs.

We are the proud winner of the prestigious STM World School award, an award voted on by industry professionals worldwide.

Our committed staff offer personalised and complete support for students during their Korean language learning experience. Whether you are seeking an intensive academic program or are more interested in building your Korean conversational skills for travel, work and leisure, Lexis Korea offers a wide range of high-quality programs suitable for all levels.

With Lonely Planet recently placing South Korea second in its Top 10 must-visit countries, now is the perfect time to come to Korea and explore the mysteries that it holds.

We invite you to begin your journey with us, and we look forward to sharing all that this vibrant and exciting country has to offer.

A stylized black ink signature of JeeHo Kim.

JeeHo Kim  
Managing Director  
Lexis Korea





## CONTENTS

### THE CITY

SEOUL	03
- SEOUL CAMPUS	
BUSAN	05
- BUSAN CAMPUS	

### THE COURSES

KOREAN COURSES	07
PATHWAY TO UNIVERSITY	09
IELTS EXAM PREPARATION	10

LEXIS EXPLORE	11
---------------	----

LEXIS ACCOMMODATION	13
---------------------	----

STUDENT SERVICES	17
------------------	----

STUDENT REVIEWS	18
-----------------	----



# THE CITY SEOUL

**SEOUL**, the capital of South Korea, is a vibrant and energetic city, offering endless opportunities for discovery and enjoyment.

Being a 'city of villages', it seems that every subway stop adds a whole new dimension to Seoul – you can experience the fashion madness of Gangnam, the alternative music scene in Hongdae, and the diverse shopping streets of Myeongdong.

As one of Asia's leading cultural sites, Seoul has five ancient palaces and five UNESCO World Heritage sites that you must pay a visit to. Come and lose yourself in hundreds of museums, performance centres and galleries. Bargain hard at markets and underground shopping centres, or treat yourself to the delights of the world's leading fashion boutiques.

This city that never sleeps becomes a whole new world at night, where you can party away at fashionable nightclubs and trendy bars, or relax with your friends over bulgogi and beer.

Seoul has something for everyone, regardless of whether you are here just for a week or for a few months. Whatever the time of year, an almost endless selection of entertainment awaits you.

## POPULATION



SOUTH KOREA

**51,820,000**

SEOUL

**9,550,000**

## LIVING EXPENSES



LUNCH  
KRW  
**7,000**



COFFEE  
KRW  
**4,000**



MOVIE TICKET  
KRW  
**11,000**

## DISTANCES FROM THE AIRPORTS



INCHEON  
INT'L  
**50**  
mins

GIMPO  
DOMESTIC  
**35**  
mins



TAXI  
START FARE  
KRW  
**3,800**



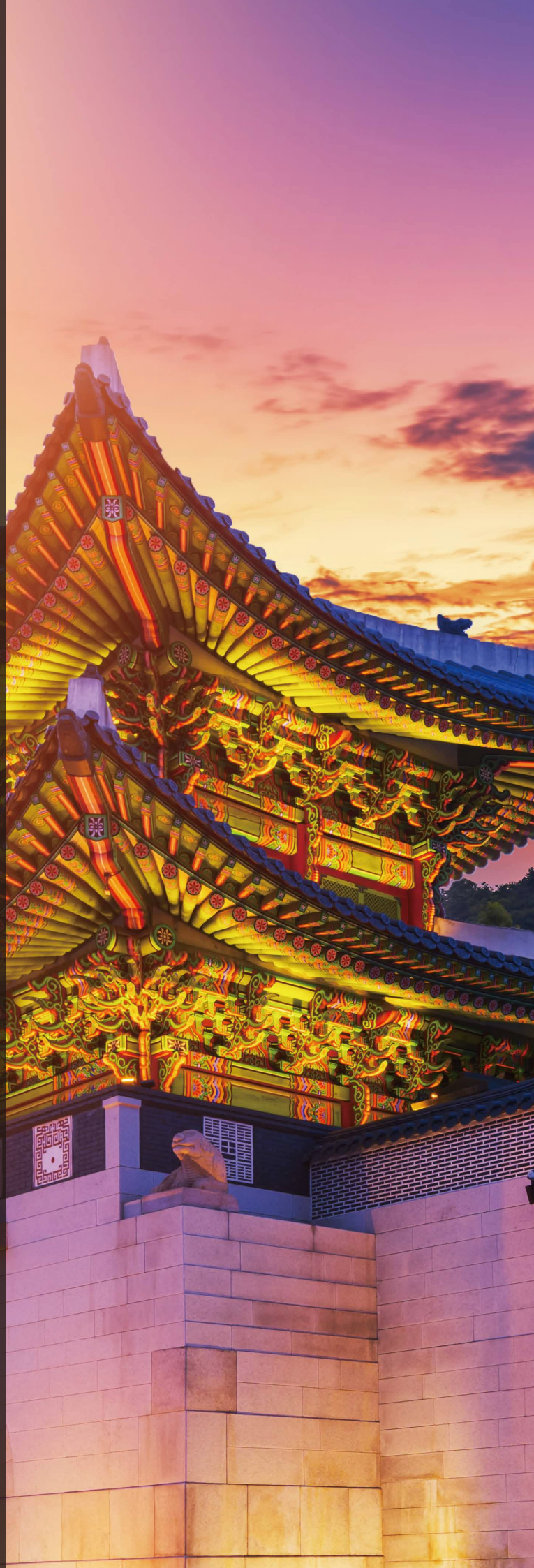
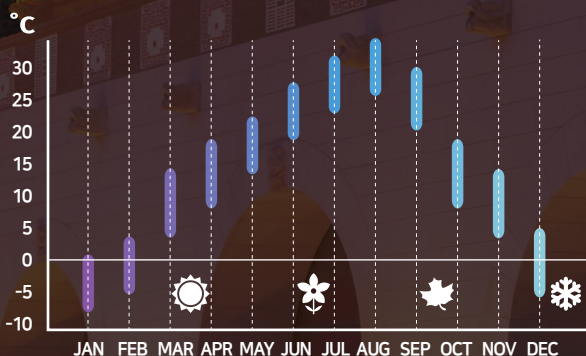
BUS  
FARE  
KRW  
**1,300**



SUBWAY  
TICKET  
KRW  
**1,350**

\* KRW 1,200 = Approx. USD 1.00  
\* The average price in 2020

## CLIMATE





# SEOUL CAMPUS

**SEOUL CAMPUS** is just a few steps away from Gangnam Station, in the vibrant heart of one of Asia's best known fashion and entertainment districts. Hundreds of cafes, restaurants, bars and clubs are within a short walk, while the fast and efficient Seoul Metro links Gangnam to the rest of the city and beyond.

Lexis Korea occupies 3 floors of the ANY Tower building, with floor-to-ceiling glass windows providing views over the buzzing streets of Gangnam. A rooftop garden area offers students a quiet refuge from the hustle and bustle of the city below.

With 18 large air-conditioned classrooms, Lexis Korea has world class facilities designed to ensure that students can make the most of their study experience in a safe and comfortable environment.

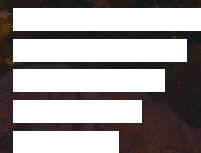
## SEOUL CAMPUS INFORMATION



STUDENTS  
**250**

AVERAGE CLASS SIZE **12**  
**18** CLASSROOMS

## TOP NATIONALITIES



US  
UK  
FRANCE  
GERMANY  
CANADA

## COMMUTING TIMES

**1** min  
STUDENT RESIDENCE  
GANGNAM STATION  
CAFES / RESTAURANTS

**15** mins  
MINI STUDIOS

**30** mins  
HOMESTAYS  
(BY BUS/SUBWAY)



Lexis Korea Seoul  
Virtual Campus Tour





# THE CITY BUSAN

**Busan**, South Korea's second largest city, is a beautiful city famed for its stunning beaches and lively food scene with fresh, delicious seafood.

Much more relaxed than the capital, Busan exudes a holiday-resort-city vibe, offering a completely different experience from Seoul. A paradise for nature lovers, Busan is surrounded by stunning natural landscapes, with a beautiful coastline and ocean views to the south as well as scenic mountains and cliffs to the north.

Just minutes from the bustling downtown area, you can lounge on one of Asia's finest beaches, explore the wilds of Korea's national parks, find inner peace meditating in a temple, or enjoy the fresh seafood at Korea's largest fish market.

There is also no shortage when it comes to Busan's thriving nightlife. Dance your night away at some of the best nightclubs at Gwangalli Beach, or if you prefer, unwind to some jazz at Haeundae Beach.

With its laid-back vibe, Busan is an ideal study location, that has an affordable cost of living and a welcoming temperate climate throughout the year.

If you wish to enjoy a relaxing and peaceful resort lifestyle whilst experiencing one of Korea's most buzzing cities, Busan is the place to be.

## POPULATION



SOUTH KOREA

**51,820,000**

BUSAN

**3,350,000**

## LIVING EXPENSES



LUNCH  
KRW

**5,500**



COFFEE  
KRW

**4,000**



MOVIE TICKET  
KRW

**11,000**

## DISTANCES FROM THE AIRPORTS



INCHEON  
INT'L

**3.5**  
hours

GIMHAE  
DOMESTIC

**30**  
mins



TAXI  
START FARE  
KRW

**3,300**



BUS  
FARE  
KRW

**1,300**

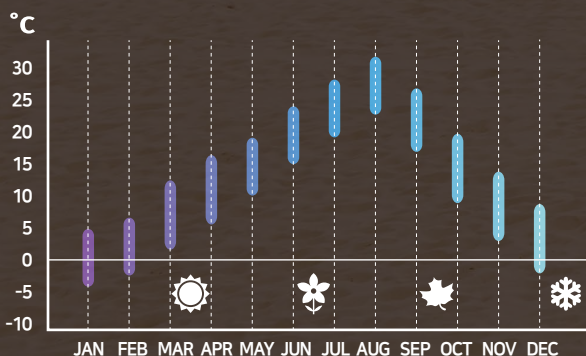


SUBWAY  
TICKET  
KRW

**1,400**

\* KRW 1,200 = Approx. USD 1.00  
\* The average price in 2020

## CLIMATE





# BUSAN CAMPUS

**BUSAN CAMPUS** is situated on the 6<sup>th</sup> floor of the DS Tower. All classrooms are equipped with educational facilities, which create a warm, inviting, safe and secure environment that makes learning easier in a modern school environment.

Located in the heart of downtown Busan, the campus is in the centre of Busan's dynamic student area of Seomyeon and immediately opposite the uber-trendy Jeonpo Cafe Street. Great transport links connect the school to tourist hotspots such as Haeundae and Gwangalli beach, while the Seomyeon district itself bustles with life day and night.

University students and the city's young professionals flock to the area in the evenings to explore the myriad of cafes, bars and restaurants, while during the day, there is an endless number of eateries to explore and experience.

## BUSAN CAMPUS INFORMATION



STUDENTS  
**120**

AVERAGE CLASS SIZE **6**  
**10** CLASSROOMS

## TOP NATIONALITIES



US  
JAPAN  
GERMANY  
RUSSIA  
BRAZIL

## COMMUTING TIMES

**1 min**

STUDENT RESIDENCE  
JEONPO CAFE STREET  
RESTAURANTS

**5 mins**

SEOMYEON STATION  
JEONPO STATION

**15 mins**

MINI STUDIOS

**30 mins**

HOMESTAYS  
(BY BUS/SUBWAY)

## Campus Transfer

Lexis Korea runs a weekly curriculum with both our Seoul and Busan campuses sharing the same course schedule. This allows students to seamlessly transfer their study from one campus to the other. Please come to our front desk and our friendly Student Services Team will organise your Campus Transfer to either Seoul or Busan.







## THE COURSES

# KOREAN COURSES

Lexis Korea has a wide range of Korean language programs both face-to-face and online to suit students of all levels and abilities. Whether you are seeking a brief introduction to the Korean language and culture, preparing for a TOPIK exam or university entrance, Lexis has dedicated staff and student support services, as well as a high quality curriculum, all aimed at helping you achieve your goals. Join us on-campus for our full cultural immersion or, if you have prior commitments or are unable to travel, there are also our live and interactive online courses. With small classes and plenty of individual attention from our local native teachers, you can be assured that your language skills will progress rapidly whether you study with us face-to-face or online.

### EACH STUDENT WILL RECEIVE



AN INDIVIDUAL  
LEVEL TEST



PERSONALISED MAP  
STUDY PLAN FOR  
PATHWAY STUDENTS



WEEK 1  
INTERVIEW  
& REVIEW



REGULAR 1:1  
ACADEMIC  
COUNSELLING

Your personal study plan is designed to guide your study whilst at Lexis. Based on your initial test results and interview with our Academic Manager, the MAP Study Plan ensures that we keep your study program on track, maximise the use of your out-of-class study time, and get the best possible language learning from your time in Korea.

### COURSE LEVEL CHART

LEVEL	1	2	3	4	5	6	7
	Foundation	Beginner	Elementary	Pre Intermediate	Intermediate	Upper Intermediate	Advanced
Study Period	1 week	4 weeks	8 weeks	12 weeks	12 weeks	12 weeks	12 weeks



### LEXIS 360°

*We understand that every student comes to Korea with their own unique goals, plans and learning needs.*

*Lexis 360° is our student academic care program, designed to ensure that all Lexis students receive individual support and attention, initiating the most successful study experience possible.*

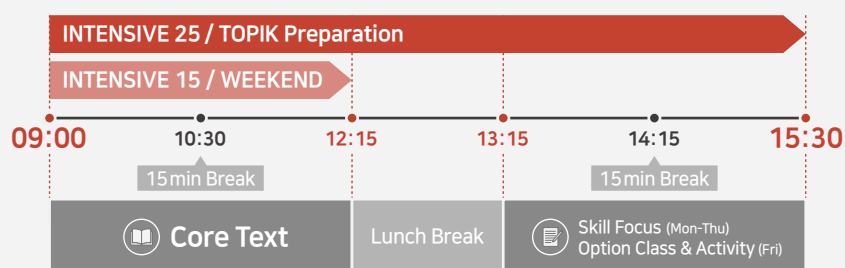




## AVAILABLE COURSES

		 Face-to-Face	 Online
REGULAR KOREAN COURSES	· Intensive Korean 25	○	○
	· Intensive Korean 15	○	○
	· Evening Korean Course	○	○
	· Weekend Korean Course	○	○
TEST PREPARATION COURSES & SPECIAL PROGRAMS	· TOPIK Preparation	○	○
	· Junior Programs	○	
	· Study Tours	○	
	· Corporate Language Training	○	
1:1 KOREAN LESSONS	· 1:1 Intensive Korean	○	○
	· 1:1 Business Korean	○	○
	· Customisable Classes	○	○

### TIMETABLE



\* Intensive Korean 15 students are also welcome to join our Friday afternoon Option Class or Activity for a small additional cost.

## OPTION CLASSES

Our Intensive Korean Option Classes are designed to allow you to focus on your own particular learning objectives. Amongst the most popular are:



Conversation



Breaking News Dictation



Job Club



TOPIK Preparation



Korean Etiquette Class



Book Club



K-Drama Class



Korean Kitchen



K-Pop Dance Class





## THE COURSES

# PATHWAY TO UNIVERSITY

Our pathway program is designed to offer an alternate streamlined entry into an undergraduate or postgraduate degree program of universities in South Korea. To qualify for admission into university, international students (both new and transfer students) will have to satisfy certain requirements, Korean language proficiency being one of these.

### PATHWAY PARTNER UNIVERSITIES

Our university pathway program will allow you to enter the following universities without taking TOPIK (Test of Proficiency in Korean).

KONKUK UNIVERSITY



HANYANG UNIVERSITY



DANKOOK UNIVERSITY



### PATHWAY PROCEDURE

#### 1 LEXIS KOREA INTENSIVE KOREAN 25

Upon enrolling at Lexis Korea, you will undertake a placement test to determine your language level. The course duration varies depending on your Korean proficiency level. Courses begin every Monday.

#### 2 UNIVERSITY LANGUAGE INSTITUTE

After attaining your university's required Korean proficiency level at Lexis Korea, you will be eligible to enter the university's final ten week language program.

#### 3 UNIVERSITY UNDERGRADUATE DEGREE

Following completion of the required level of the University Language Program, and on the condition that you meet all other requirements, you will be eligible to undertake an Undergraduate or Postgraduate Program.



# THE COURSES

## IELTS EXAM PREPARATION

Lexis not only offers Korean language programs – we are also one of Korea's leading IELTS exam preparation centres. The IELTS exam is used as a key entry requirement for universities in Korea and around the world. Lexis Korea's fast-paced and challenging exam preparation program is taught by qualified native English speaking instructors. Whether your aim is to attain an IELTS score for further tertiary study, or just to take a structured English language program in a fabulous multicultural environment, Lexis's academic IELTS program is a great way to take your English proficiency to the next level. Both our Seoul and Busan campuses are official IELTS Test Centres. Our students are at an advantage as they are able to take the test at the same place where they attend classes.

### WHAT IS IELTS?

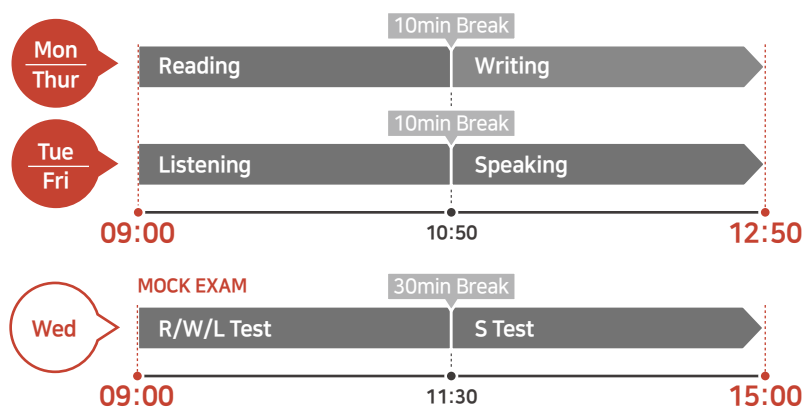
The International English Language Testing System is an international standardised test of English language proficiency. It is jointly managed by the University of Cambridge ESOL Examinations, the British Council and IDP Education Pty Ltd. There are two versions of IELTS: the Academic version and the General Training version. IELTS is accepted by most English speaking academic institutions, and may also be used for immigration purposes to Australia, US, New Zealand, Canada and UK.

#### WHY STUDY IELTS AT LEXIS?

Whatever your needs are, be it to satisfy immigration requirements of an English speaking country or to further your academic studies at a university, our IELTS exam preparation course will help you to realise your study purposes. At Lexis, you will:

- 01** Receive tuition from a knowledgeable and experienced IELTS exam preparation instructor.
- 02** Take practice tests using past papers, with answer guides and personalised teacher feedback.
- 03** Improve your reading, writing, grammar, vocabulary, speaking and listening skills.
- 04** Improve your English whilst working towards an internationally recognised qualification.

#### IELTS EXAM PREPARATION COURSE TIMETABLE





# LEXIS EXPLORE KOREAN CULTURAL EXPERIENCES

To ensure that you make the most of your time at Lexis Korea, we offer monthly social and cultural activities with regular excursions to various places of interest, both historical and contemporary, to share with you our Korean history, culture and traditions.



## LEXIS ACTIVITIES

There is so much more to explore than language study! Our Student Services team arranges regular afternoon activities and day trips to introduce glimpses of South Korea and its culture.

*Check out our blogs at [www.LexisSeoul.com](http://www.LexisSeoul.com) and [www.LexisBusan.com](http://www.LexisBusan.com) for the latest updates!*

## LEXIS MEET UP

For many students, the highlight of their stay is Lexis Meet Up. This fortnightly event, held at a local cafe, provides a welcoming and friendly atmosphere for all to enjoy. It creates a wonderful opportunity to become friends with local Koreans and other classmates from all over the world for an exchange of language and culture.



## LEXIS STUDENT NIGHT

Koreans have a strong appreciation of the pleasures of dining with friends. Lexis Student Night, a monthly social gathering, brings together both our international and local students for a great evening of Korean food, beer, and soju. There's no better way to break the ice and forge friendships. That's why Lexis Student Night is the highlight of our social calendar.





**K-pop Dance**

*#Korean Culture Class*



**Korean Calligraphy**

*#Korean Culture Class*



**Student Night**

*#Korean Dining with Friends*



**King Sejong the Great**

*#Korean Culture Class*



**Korean Accessories**

*#Korean Culture Class*



**Taekwondo**

*#Korean Culture Class*



**Korean Traditional Masks**

*#Korean Culture Class*



**Meet Up**

*#with Local Koreans  
& International Peers*



**Korean Kitchen**

*#Korean Cooking Class*



**Gyeongbok Palace Activity**

*#Korean Traditional Experience*



**Kimchi Museum**

*#Korean Culture Class*



**Korean Paper Craft**

*#Korean Culture Class*



# LEXIS ACCOMMODATION

At Lexis Korea, we make sure that you have access to comfortable, secure, and affordable accommodation within a short distance from our campuses. Amongst our popular accommodation options are:

## STUDENT RESIDENCE

Lexis Student Residence is high quality student accommodation provided for the exclusive use of Lexis Korea students.

This studio type accommodation includes single, twin and quad bed options that are complete with basic furnishings, en-suite bathroom/toilet, free WIFI, as well as private laundry and kitchen facilities.

The single bed option is suitable for those who appreciate privacy and prefer to live on their own, whereas the twin and quad options are shared rooms, providing students with the opportunity to meet other fellow students and make new friends.



### / SEOUL

The Lexis Seoul Student Residence building is located directly next door to Seoul campus, taking only one minute to walk to our school and less than three minutes to the transport Gangnam Underground station. The area surrounding the Lexis Student Residence has an endless number of cafes, bars, and restaurants for students to select from.



## STUDENT RESIDENCE OPTIONS & FACILITIES

### Room Type

Single

Twin

Quad

Individual booking is possible for multiple bedrooms.

### Facilities



59 ROOM  
59 sqm



ENSUITE  
BATHROOM  
& TOILET



KITCHEN



BALCONY



FREE  
WIFI

### Furniture & Appliances



BED



DESK  
& CHAIR



TV



FRIDGE



MICRO  
WAVE



KETTLE



LAUNDRY  
MACHINE



HAIR  
DRYER



AIR-CON  
& HEATER

### Distance

1 min

LEXIS  
CAMPUS

2 mins

GANGNAM  
STATION

1 hr

INCHEON  
AIRPORT

### Local amenities within walking distance

- Sauna available KRW8,000/day in the basement
- Fitness centre available KRW12,000/day in the basement
- A convenience store and restaurants available on 1<sup>st</sup>/ground and 2<sup>nd</sup> floor
- Dry cleaning service available on 2<sup>nd</sup> floor



### Perfect Location

1 minute walk to the campus,  
shops and restaurants



### Comfortable Stay

With most modern facilities and  
building equipped amenities  
such as sauna and gym



### Various Room Types

Single

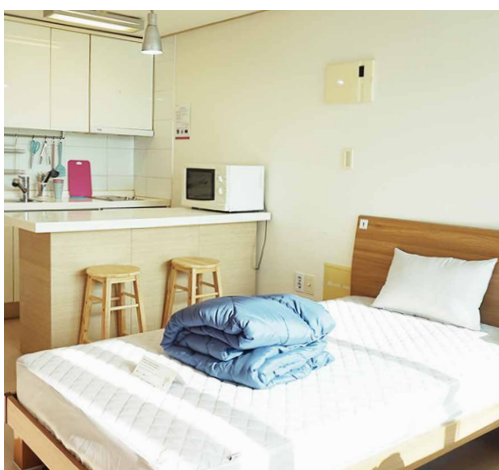
Twin

Quad



## / BUSAN

The Lexis Busan Student Residence building is located directly opposite to Busan campus in Seomyeon, which is only a minute walk from the school and just a short 5-7 minutes to the transport hubs of Seomyeon Station and Jeonpo Station. The area surrounding the Lexis Student Residence has a wide range of cafes, bars and restaurants for students to select from.



## STUDENT RESIDENCE OPTIONS & FACILITIES

### Room Type

Single

Twin

Quad

Individual booking is possible for multiple bedrooms.

### Facilities



43 ROOM  
43 sqm



ENSUITE  
BATHROOM  
& TOILET



KITCHEN



BALCONY



FREE  
WIFI

### Furniture & Appliances



BED



DESK  
& CHAIR



TV



FRIDGE



MICRO  
WAVE



KETTLE



LAUNDRY  
MACHINE



HAIR  
DRYER



AIR-CON  
& HEATER

### Distance

1 min

LEXIS  
CAMPUS

5 mins

SEOMYEON  
STATION

5 mins

JEONPO  
STATION

1 min

JEONPO  
CAFE STREET

40 mins

GIMHAE  
INTERNATIONAL  
AIRPORT

### Local amenities within walking distance

- A convenience store and restaurants available on 1<sup>st</sup>/ground floor



# LEXIS ACCOMMODATION

## HOMESTAY

### SEOUL | BUSAN



Homestays allow students to live with a local family, experience day-to-day life in Korea, and enjoy amazing home-cooked Korean food! There is no better way to develop your language skills and learn more about this fascinating country than to fully immerse yourself in the culture and society. As with most Koreans, our homestay families are eager to share their culture with our students, and can introduce you to some of the hidden delights of Seoul and Busan.

Some families live in downtown apartments, others in larger homes in the suburbs, but regardless you will be warmly welcomed to the house as a guest, and will have the chance to experience the hospitality for which Koreans are well known for.

#### HOMESTAY OPTIONS & FACILITIES

##### Half board

- MON-FRI : BREAKFAST & DINNER
- SAT-SUN : BREAKFAST, LUNCH & DINNER

##### Bed & Breakfast

- MON-SUN : BREAKFAST ONLY

Homestay rooms are all for single use and include:



#### Shared Facilities



## MINI STUDIO

### SEOUL | BUSAN



Lexis Korea can arrange accommodation from a selection of mini-studio locations in both Gangnam and Seomyeon. Mini-studios, or better known as 'goshiwon' to the locals, are low-priced accommodation normally used by university students. Rooms are self-contained, with basic furnishings and a private bathroom. Kitchen and laundry facilities are shared, with most providing free rice, noodles and kimchi.

Please keep in mind however that while mini studios are the cheapest possible private accommodation, the rooms are very small!

Typically, the mini-studios we provide are within a fifteen-minute walk to the Lexis campus, and are a short stroll from a near-endless selection of shops, restaurants and bars. Full CCTV security systems are in place, along with auto-locking doors and on-site security; making mini-studios an ideal option for women travelling alone. Many providers offer 'women only' floors, so please request this if it would make you feel more comfortable.



#### MINI STUDIO FACILITIES

Mini studio rooms are all for single use and include:



#### Shared Facilities



#### Distance



## SERVICED APARTMENT

For those wanting a more comfortable stay, serviced apartments offer a higher standard of accommodation. We have affiliated partners in both Seoul and Busan to offer you convenient and comfortable accommodation options. Please do note however that serviced apartments are one of the more expensive options and therefore are more suitable for short term stays.



### / SEOUL - Artnouveau City

We are affiliated with Gangnam Artnouveau City which is located right in the heart of Gangnam, approximately a short 3 minute walk from Lexis Seoul and 5 minutes from Gangnam Station Exit 5. We offer a double room priced at KRW95,000 per night. Bedroom and living room are separable by sliding door, with a fully furnished built-in kitchen and private laundry facilities. There is also a fitness centre provided for guests at no extra charge.

#### ARTNOUVEAU CITY FACILITIES

##### Rooms include:



##### Distance



### / BUSAN - Toyoko Inn

In Busan, we are affiliated with Toyoko Inn which is a 5 minute walk from our Lexis Busan campus. We offer Single Room and Double Room options priced respectively at KRW55,000 and KRW77,000 per night. Breakfast is included within the price.

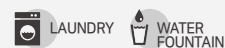


#### TOYOKO INN FACILITIES

##### Rooms include:



##### Shared Facilities



##### Distance

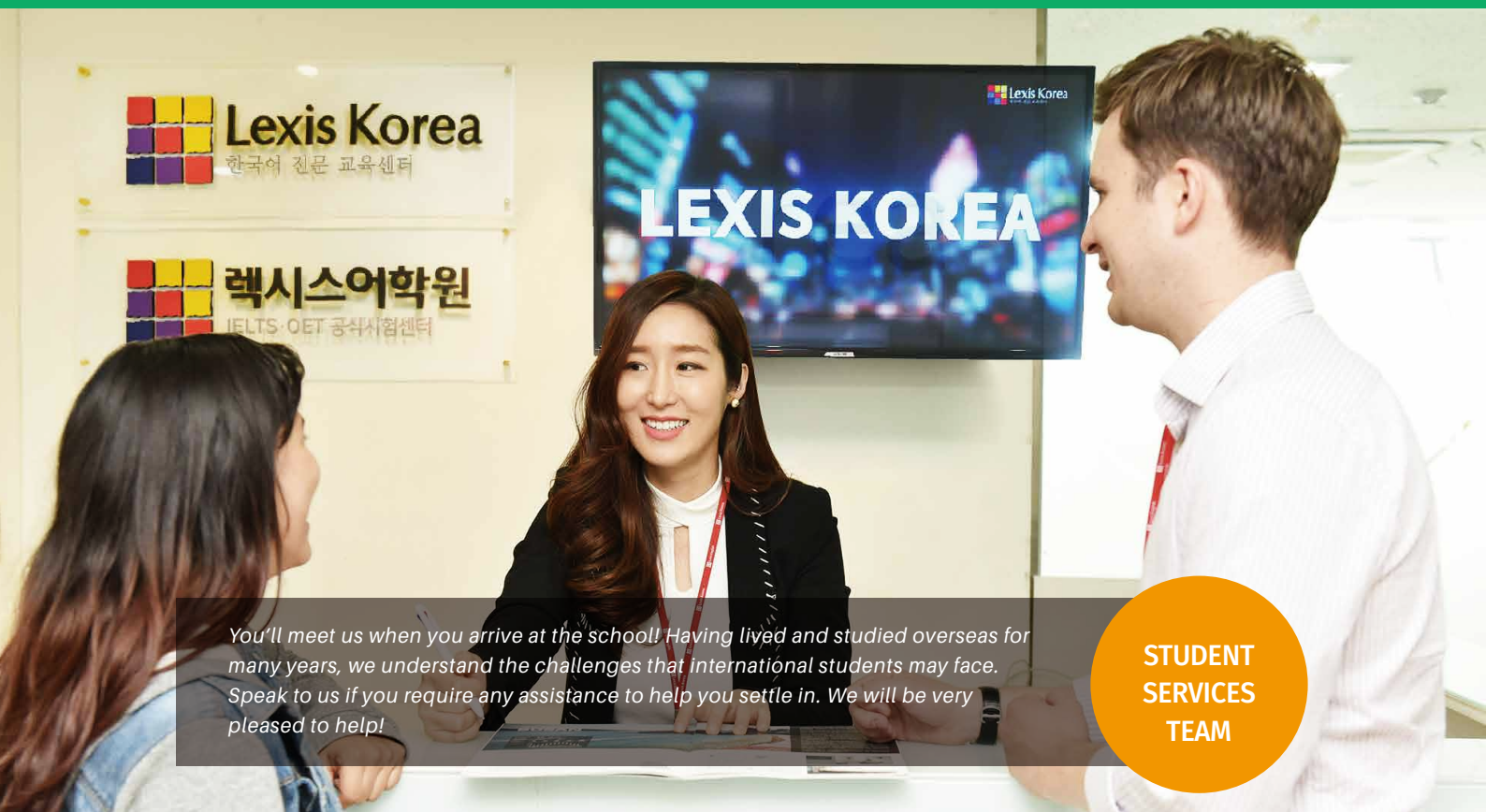




# STUDENT SERVICES

From the time that you decide to study with us until the moment we bid you goodbye, Lexis Korea Student Services staff will be there to assist you with your stay.

To ensure a smooth journey and your safe arrival, we provide Airport Transfers, a comprehensive Arrival Guide and the comfort of a 24/7 emergency line. Once you are with us, we encourage you to meet our Student Services team and get help to make your stay stimulating and fulfilling.



*You'll meet us when you arrive at the school! Having lived and studied overseas for many years, we understand the challenges that international students may face. Speak to us if you require any assistance to help you settle in. We will be very pleased to help!*

**STUDENT  
SERVICES  
TEAM**

## ASK US ABOUT



ACCOMMODATION



VISA ISSUES



COURSE  
EXTENSION



BUYING SIM CARD



FINDING WORK



PUBLIC  
TRANSPORTATION  
INFORMATION



MEDICAL ISSUES



BOOKING ACTIVITIES



FLIGHT /  
HOLIDAY



### THE LEXIS KOREA ADVANTAGE CARD



Lexis Korea Advantage Card offers student discounts around our campus location. If you are a current or former Lexis Korea student, you will be able to use this card in Korea, and access great discounts and special offers across a range of providers. Have a look at all the great advantages that Lexis students have access to!

# STUDENT REVIEWS



## Dana from United States

The teachers are the best part of this experience. They engage the class using various methods to make sure the students understand. They always explain things thoroughly and were very patient with the students. They are fun, yet keep learning a priority. It was also fun to meet students from all around the world with the same goal - learning the Korean language. I wish I could stay much longer I hope to come back and study for much longer next time.



## Savannah from Switzerland

My teacher made the class very fun and had a lot of patience with us. She made me want to interact in class and also pay attention. She would introduce a wide variety of topics as well as vocabulary. Classes were never boring. I stayed in the mini studio and the accommodation was also great. Our mini studio manager was very friendly, willing to help and even take us out for activities. The support system in Lexis is very good and I felt well taken care of. Thank you so much for a great time! I also appreciate that I could learn so much and really see my Korean skills improve. I'd love to come again!

## Natalie from Canada

Staying in Busan and attending Lexis for the past 5 months has been a huge learning curve and exciting all at the same time. I've met many great people from different countries and made friends that I will never forget. Within the classes of Lexis I could feel myself improving as the weeks went by and as I levelled up. There was a good mixture of speaking Korean along with vocabulary and grammatical writing exercises which gave the lessons diversity and helped me improve my Korean quickly. The teacher I had was exceptional at explaining Korean vocabulary and grammar so that I immediately understood the meaning and was able to use the vocabulary or grammatical concepts properly. When I go home, I know that I will always remember my experiences in Korea and in Lexis Korea, I really hope to one day return.

## Emma from Thailand

The first day I came to Lexis Korea, the people were helpful, welcoming and lovely. In class, the teachers are all friendly and it's very nice when the teachers give students their Kakaotalk ID because I feel like I could ask them for help anytime and anywhere I go. I love Lexis Korea very much. Thank you so much for giving me such good experiences and such a fun time in Korea.



## Kelly from Australia

The Busan campus is quickly establishing itself as one of the leading Korean language institutes in the country. The teachers are friendly, caring, knowledgeable and always create a positive environment conducive to learning. Studying all day can be tiring, but the times flies because the classes are fun, enjoyable and engaging. My Korean language skills have improved greatly thanks to the wonderful teachers. I highly recommend LEXIS BUSAN.

Apply or fill out an info request at:  
<https://www.dreamstudiesabroad.com/schools/lexis-korea>